



## Resettable Crash Sensors

First Technology's 360° Resettable Crash Sensors directly shut down the fuel pump or main contactor upon vehicle impact, reducing the risk of fire and electrical shock in post-crash situations. These devices are a low cost solution to vehicle safety requirements and approved for vehicle installation by major automotive manufacturers worldwide.

First Technology is an ISO and TS registered company. We provide world-class quality products error free and on time.

### Features:

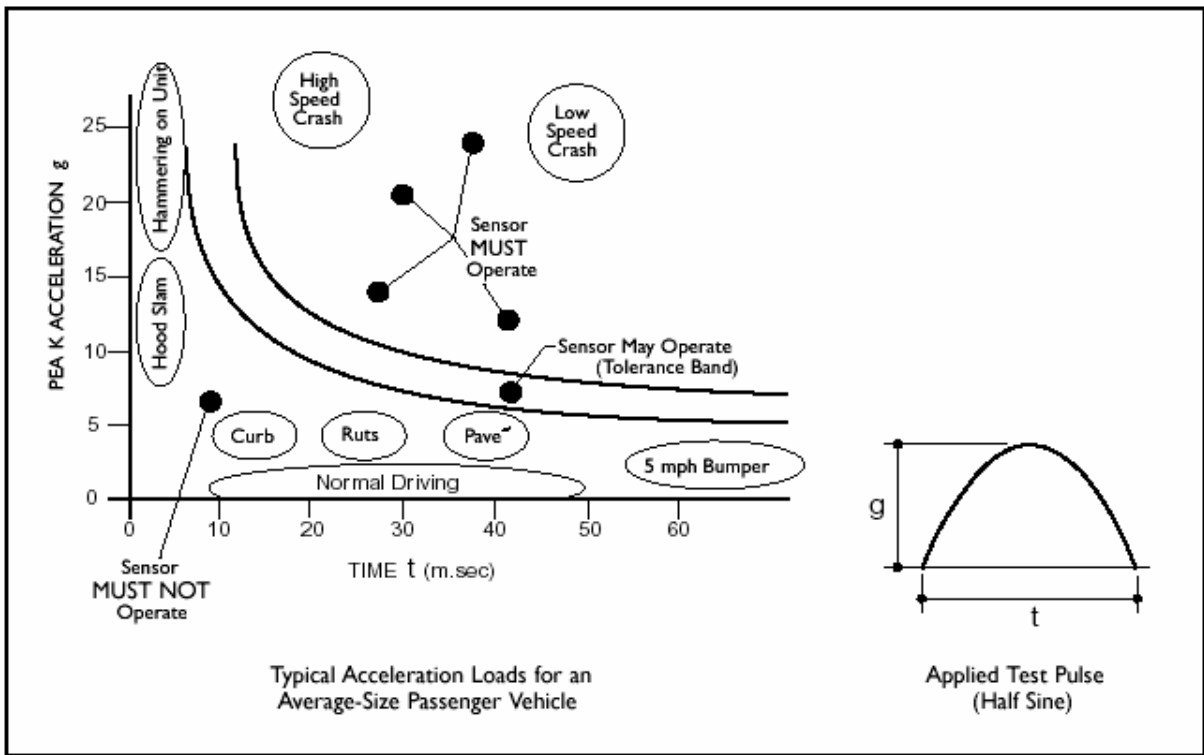
- Unique magnet restrained mass inertia mechanism
- Rated at 10 Amps electrical load
- Manually resettable

- Shock calibration ranges available between 8g and 30g
- Stops fuel pump or electrical system operation
- Secondary circuit provides additional function

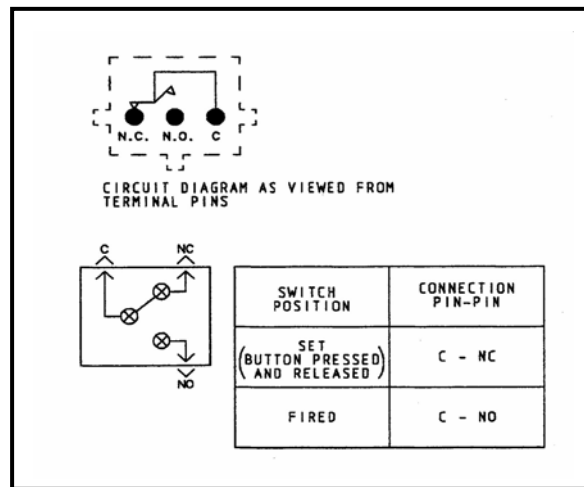
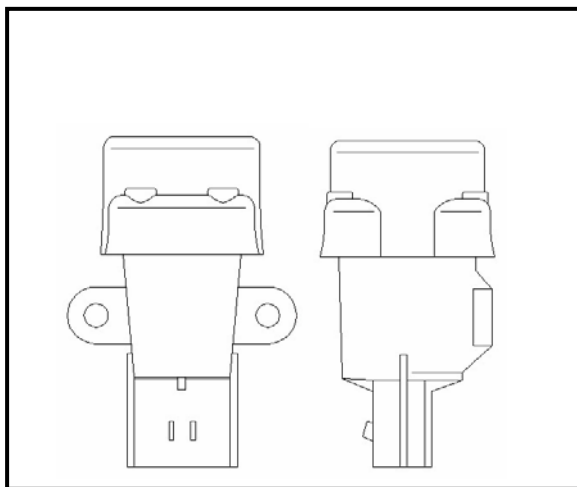
### Benefits:

- Reduces the risk of fire following a crash
- Responsive to 360° impact
- Ability to trigger GPS distress signal
- Capable of carrying fuel-pump load
- Sensory feedback
- Customized for various installations





Above are the typical performance characteristics of resettable crash sensors



## Global Sales Offices

### North America

Sensata Technologies, Inc.  
Electrical Protection  
529 Pleasant Street, MS B-49  
Attleboro, Massachusetts 02703  
Phone: 1-508-236-3287

### Europe

Sensata Technologies Holland B.V.  
Kolthofsingel 8  
7602 EM Almelo  
The Netherlands  
Phone: 31-546-879560

### Asia

Sensata Technologies (Shanghai) Co., Ltd.  
Novel Plaza, 8th Floor  
128 Nanjing Road  
West Huangpu District  
Shanghai 200003, PRC  
Phone: 86-21-23061553

### Central & South America

Sensata Technologies Sensores e  
Controles Do Brasil LTDA.  
Rua Azarias de Melo, 648  
Bairro Taquaral-Campinas/SP  
Brasil  
Phone: 19-3754-1142

### Middle East & India

Sensata Technologies India Pvt. Ltd.  
Bagmane Tech Park  
Byrasandra CV Raman Nagar  
Bangalore-560 093  
India  
Phone: 91-25-099329



www.sensata.com